

Summary of Employment, Demographics, and Commuting Patterns for Marion County, Florida



**FLORIDA DEPARTMENT *of*
ECONOMIC OPPORTUNITY**

March 2015

Contents

Labor Shed Analysis	3
Executive Summary.....	4
Marion County Quick Facts.....	5
Marion County Business and Geography Quick Facts	6
Labor Force, Employment and Unemployment.....	7
Population.....	7
Marion County	8
Where Workers Work in Marion County.....	8
Work Area Profile Summary	9
Work Area Profile Summary Continued-Demographics	10
Where Workers Live in Marion County	11
Home Area Profile Summary	12
Home Area Profile Summary Continued-Demographics	13
Labor Inflow/Outflow Map	14
Labor Inflow/Outflow Summary	15
Work Destination Summary.....	17
Home Destination Summary.....	18
Travel of Workers Who Live in Marion County.....	19
Travel of Workers Who Work in Marion County	21

Labor Shed Analysis

A labor shed analysis is defined as where workers work and where workers live relative to a user-defined selection area. This analysis helps to determine where a labor market draws its commuting workers. Labor shed studies can draw comparisons between various geographies including state, Congressional District, Metropolitan Statistical Area (MSA), county, Workforce Investment Area (WIA), Zip Code, and Census tract. By indicating how many of the selection area workers work outside the area, labor sheds can help identify potential pools of workers who would be available for work in the user-defined area.

Labor shed studies provide economic developers and existing or prospective employers a tool to understand the local labor market and make informed expansion and site selection decisions.

OnTheMap, Census Bureau

OnTheMap is a mapping and reporting tool developed by the U.S. Census Bureau showing employment and home locations of workers with companion reports for user-defined areas. It is the first synthetic data product released by the Census Bureau. OnTheMap is an important tool for Florida to perform labor inflow/outflow analyses and provide commuting data to planning and economic development agencies as well as Regional Workforce Boards. OnTheMap data is also used by the Department of Economic Opportunity to help quantify natural disaster impacts for emergency management agencies based on where workers live and where they work.

OnTheMap integrates existing data from state-supplied administrative records on workers and employers with existing federal censuses, surveys, and other administrative records. The state Labor Market Information (LMI) agencies supply key data from unemployment wage records and from businesses each quarter. The Census Bureau merges the state-supplied data with current demographic information to produce the data found in OnTheMap. By combining data from different administrative sources, censuses, and surveys, the Census Bureau produces local employment information that was not previously available.

Florida Department of Economic Opportunity, Bureau of Labor Market Statistics (LMS)

The Florida Department of Economic Opportunity's Bureau of Labor Market Statistics produces, analyzes, and distributes labor statistics to improve economic decision making. These data are produced as part of the federal/state cooperative statistical program with the U.S. Department of Labor, Bureau of Labor Statistics, and the Employment and Training Administration.

Executive Summary

The analysis of workforce and demographic characteristics, including commuting patterns of Marion County was conducted at the request of CareerSource Citrus Levy Marion. This report includes population, labor force, and demographics for Marion County.

A detailed examination of commuting patterns for Marion County shows that the county has a net outflow of 13,699 workers. Using the latest annual Census data available, there were 81,998 workers employed in Marion County and 95,697 workers living in the county. Of the workers who lived in the county, there were 44,991 workers who were employed outside the county.

With 47 percent of workers who reside in Marion County employed outside the county, outflow is well below the highest rates seen in some of the rural counties Florida such as Dixie County with 86.4 percent outflow and Gilchrist County with 85.7 percent worker outflow.

Of the 44,991 Marion County resident workers who are employed outside the county, the top destination counties are Orange (5,377 workers), Alachua (4,637 workers), Lake (4,434 workers), Sumter (4,120 workers), and Hillsborough (3,546 workers).

The commute for Marion County workers is a relatively long one with 38.3 percent of home to work commutes being less than 10 miles and 61.7 percent longer than 10 miles. Commutes of 10 to 24 miles are done by 22.3 percent of workers, commutes of 25 to 50 miles by 10.6 percent of workers, and commutes of over 50 miles by 28.8 percent of workers.

Commutes into Marion County of less than 10 miles are done by 42.6 percent of outside workers, while commutes of 10 to 24 miles are done by 22.9 percent of workers, commutes of 25 to 50 miles by 10.4 percent of workers, and commutes greater than 50 miles by 24.0 percent of workers.

Marion County Quick Facts

People QuickFacts	Marion County	Florida
Population, 2013 estimate	337,362	19,552,860
Population, 2010 (April 1) estimates base	331,303	18,802,690
Population, percent change, April 1, 2010 to July 1, 2013	1.80%	4.00%
Population, 2010	331,298	18,801,310
Persons under 5 years, percent, 2013	5.00%	5.50%
Persons under 18 years, percent, 2013	18.90%	20.60%
Persons 65 years and over, percent, 2013	27.40%	18.70%
Female persons, percent, 2013	52.00%	51.10%
White alone, percent, 2013 (a)	83.10%	78.10%
Black or African American alone, percent, 2013 (a)	13.10%	16.70%
American Indian and Alaska Native alone, percent, 2013 (a)	0.50%	0.50%
Asian alone, percent, 2013 (a)	1.60%	2.70%
Native Hawaiian and Other Pacific Islander alone, percent, 2013 (a)	0.10%	0.10%
Two or More Races, percent, 2013	1.60%	1.90%
Hispanic or Latino, percent, 2013 (b)	11.60%	23.60%
White alone, not Hispanic or Latino, percent, 2013	72.70%	56.40%
Living in same house 1 year & over, percent, 2009-2013	84.60%	83.70%
Foreign born persons, percent, 2009-2013	7.60%	19.40%
Language other than English spoken at home, pct age 5+, 2009-2013	11.90%	27.40%
High school graduate or higher, percent of persons age 25+, 2009-2013	85.00%	86.10%
Bachelor's degree or higher, percent of persons age 25+, 2009-2013	17.40%	26.40%
Veterans, 2009-2013	39,952	1,569,406
Mean travel time to work (minutes), workers age 16+, 2009-2013	24.8	25.9
Housing units, 2013	162,448	9,047,612
Homeownership rate, 2009-2013	76.70%	67.10%
Housing units in multi-unit structures, percent, 2009-2013	9.90%	30.10%
Median value of owner-occupied housing units, 2009-2013	\$119,400	\$160,200
Households, 2009-2013	134,002	7,158,980
Persons per household, 2009-2013	2	3
Per capita money income in past 12 months (2013 dollars), 2009-2013	\$21,992	\$26,236
Median household income, 2009-2013	\$39,453	\$46,956
Persons below poverty level, percent, 2009-2013	18.10%	16.30%

Source: US Census Bureau State & County QuickFacts

Marion County Business and Geography Quick Facts

Business QuickFacts	Marion County	Florida
Private nonfarm establishments, 2012	6,716	502,414
Private nonfarm employment, 2012	73,040	6,932,382
Private nonfarm employment, percent change, 2011-2012	1.40%	3.00%
Nonemployer establishments, 2012	22,471	1,775,605
Total number of firms, 2007	29,443	2,009,589
Black-owned firms, percent, 2007	7.50%	9.00%
American Indian- and Alaska Native-owned firms, percent, 2007	S	0.50%
Asian-owned firms, percent, 2007	2.40%	3.20%
Native Hawaiian and Other Pacific Islander-owned firms, percent, 2007	F	0.10%
Hispanic-owned firms, percent, 2007	8.20%	22.40%
Women-owned firms, percent, 2007	27.60%	28.90%
Manufacturers shipments, 2007 (\$1000)	1,841,509	104,832,907
Merchant wholesaler sales, 2007 (\$1000)	1,639,464	221,641,518
Retail sales, 2007 (\$1000)	4,218,810	262,341,127
Retail sales per capita, 2007	\$13,060	\$14,353
Accommodation and food services sales, 2007 (\$1000)	353,110	41,922,059
Building permits, 2012	401	64,810
Geography QuickFacts	Marion County	Florida
Land area in square miles, 2010	1,584.55	53,624.76
Persons per square mile, 2010	209.10	350.60
FIPS Code	83	12
Metropolitan or Micropolitan Statistical Area	Ocala, FL Metro Area	
<p>(a) Includes persons reporting only one race. (b) Hispanics may be of any race, so also are included in applicable race categories. FN: Footnote on this item for this area in place of data NA: Not available D: Suppressed to avoid disclosure of confidential information X: Not applicable S: Suppressed; does not meet publication standards Z: Value greater than zero but less than half unit of measure shown F: Fewer than 100 firms Source: US Census Bureau State & County QuickFacts</p>		

Source: US Census Bureau State & County QuickFacts

Marion County

Labor Force, Employment and Unemployment

	DECEMBER 2014				DECEMBER 2013			
	LABOR FORCE	EMPLOY- MENT	UNEMPLOYMENT LEVEL	UNEMPLOYMENT RATE (%)	LABOR FORCE	EMPLOY- MENT	UNEMPLOYMENT LEVEL	UNEMPLOYMENT RATE (%)
CLM Region	198,247	185,524	12,723	6.4	201,543	187,529	14,014	7.0
Citrus	52,655	49,139	3,516	6.7	55,000	51,163	3,837	7.0
Levy	15,748	14,799	949	6.0	16,105	15,029	1,076	6.7
Marion	129,844	121,586	8,258	6.4	130,438	121,337	9,101	7.0
Florida	9,571,000	9,056,000	515,000	5.4	9,395,000	8,837,000	558,000	5.9

Source: U.S. Department of Labor, Bureau of Labor Statistics, Local Area Unemployment Statistics

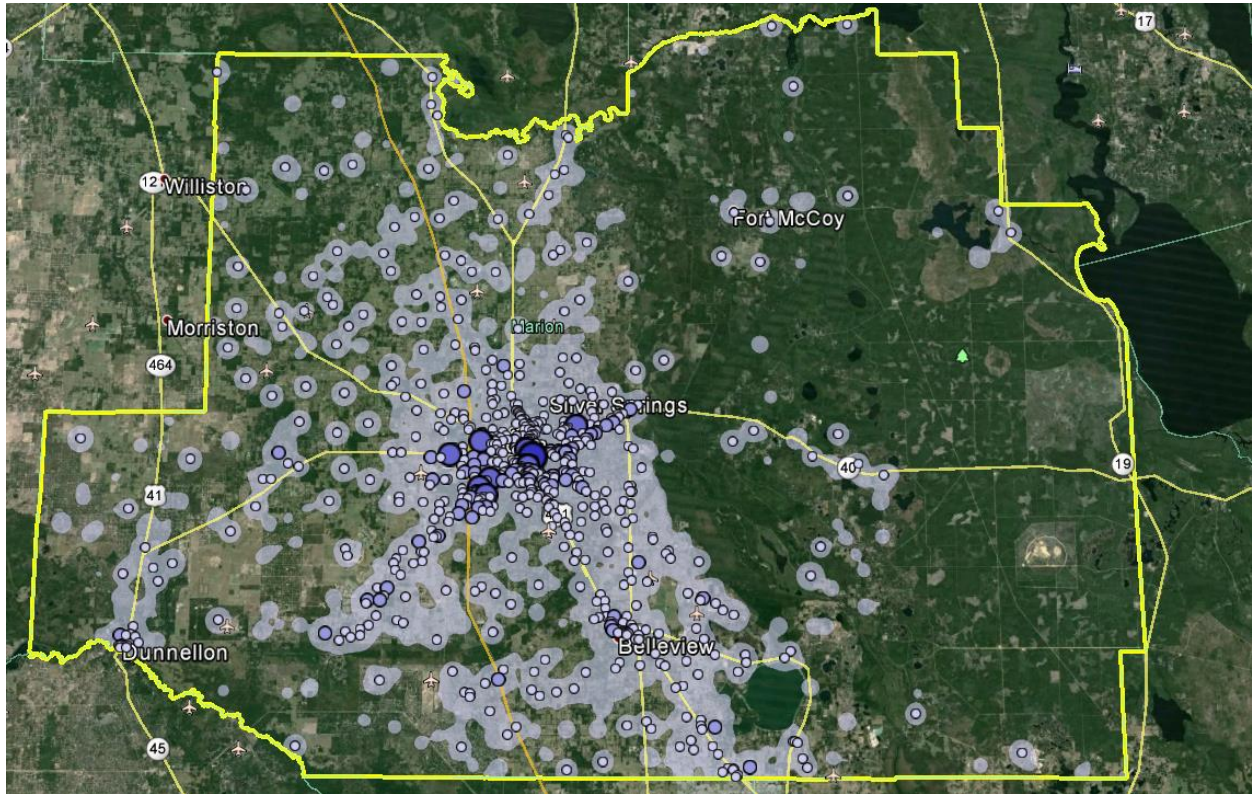
Population

Area	2013 Estimate
CLM Region	516,277
Citrus	139,271
Levy	39,644
Marion	337,362
Florida	19,552,860

Source: U.S. Census Bureau, 2013 Population Estimates

Marion County

Where Workers Work in Marion County



Source: U.S. Census Bureau, Longitudinal Employer-Household Dynamics program; Google Earth

Map Legend

Job Density [Jobs/Sq. Mile]	Job Count [Jobs/Census Block]
5 - 970	1 - 13
971 - 3,867	14 - 200
3,868 - 8,695	201 - 1,010
8,696 - 15,454	1,011 - 3,191
15,455 - 24,145	3,192 - 7,791

The highest concentrations of workers within Marion County are around Ocala and along major transportation corridors. The map illustrates the continuing development to the west of the original city center along State Highways 27, 40, and 200. Interstate Highway 75 has also played an important role in facilitating that development.

Marion County Work Area Profile Summary

Total Primary Jobs		
	Count	Share
Total Primary Jobs	81,998	100.0%
Jobs by Worker Age		
	Count	Share
Age 29 or younger	16,801	20.5%
Age 30 to 54	45,600	55.6%
Age 55 or older	19,597	23.9%
Jobs by Earnings		
	Count	Share
\$1,250 per month or less	20,212	24.6%
\$1,251 to \$3,333 per month	39,354	48.0%
More than \$3,333 per month	22,432	27.4%
Jobs by NAICS Industry Sector		
	Count	Share
Agriculture, Forestry, Fishing and Hunting	1,810	2.2%
Mining, Quarrying, and Oil and Gas Extraction	221	0.3%
Utilities	245	0.3%
Construction	4,779	5.8%
Manufacturing	5,943	7.2%
Wholesale Trade	3,313	4.0%
Retail Trade	12,625	15.4%
Transportation and Warehousing	2,045	2.5%
Information	1,590	1.9%
Finance and Insurance	2,294	2.8%
Real Estate and Rental and Leasing	1,197	1.5%
Professional, Scientific, and Technical Services	3,140	3.8%
Management of Companies and Enterprises	366	0.4%
Administration & Support, Waste Management and Remediation	3,764	4.6%
Educational Services	9,780	11.9%
Health Care and Social Assistance	12,259	15.0%
Arts, Entertainment, and Recreation	1,774	2.2%
Accommodation and Food Services	7,065	8.6%
Other Services (excluding Public Administration)	2,487	3.0%
Public Administration	5,301	6.5%

Source: U.S. Census Bureau, Longitudinal Employer-Household Dynamics program

Marion County

Work Area Profile Summary Continued-Demographics

Jobs by Worker Race		
	Count	Share
White Alone	68,813	83.9%
Black or African American Alone	10,214	12.5%
American Indian or Alaska Native Alone	386	0.5%
Asian Alone	1,727	2.1%
Native Hawaiian or Other Pacific Islander Alone	58	0.1%
Two or More Race Groups	800	1.0%

Jobs by Worker Ethnicity		
	Count	Share
Not Hispanic or Latino	73,759	90.0%
Hispanic or Latino	8,239	10.0%

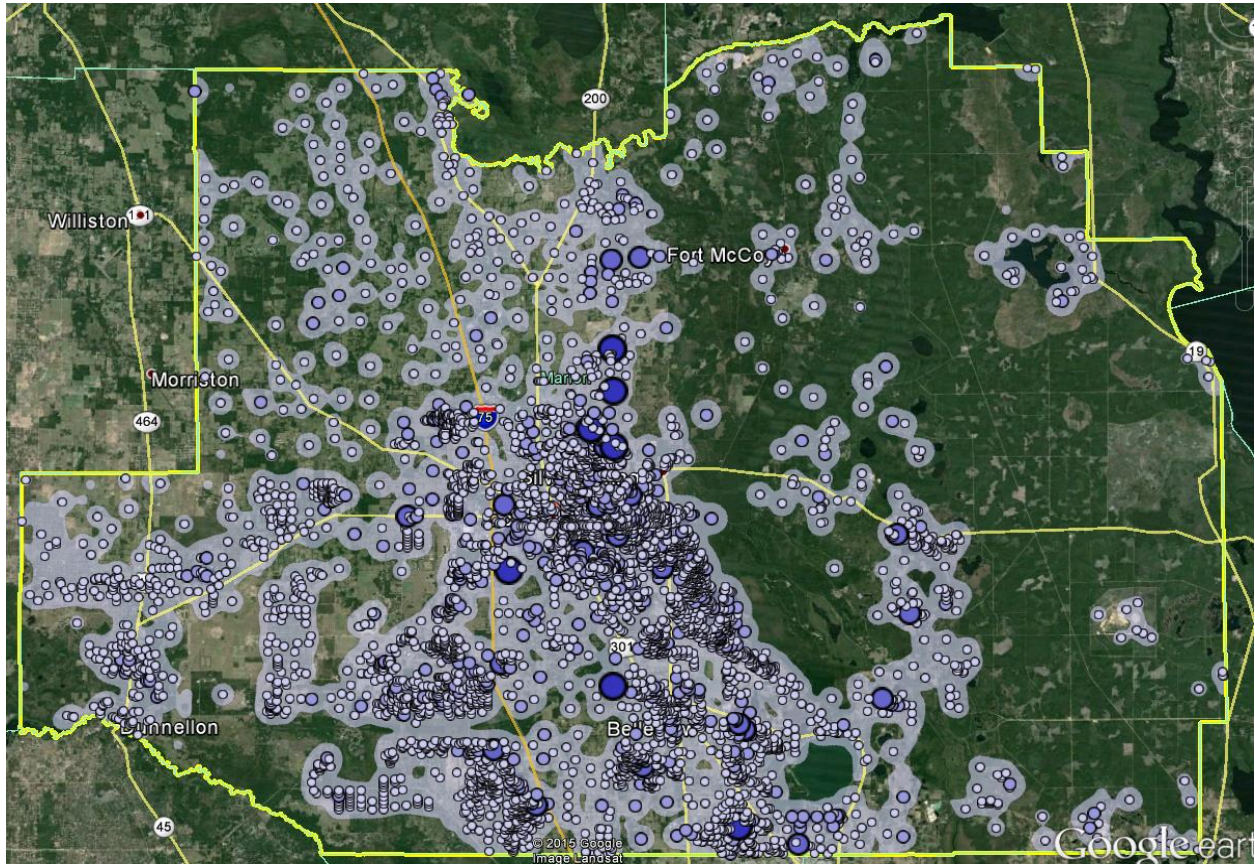
Jobs by Worker Educational Attainment		
	Count	Share
Less than high school	8,416	10.3%
High school or equivalent, no college	19,854	24.2%
Some college or Associate degree	21,579	26.3%
Bachelor's degree or advanced degree	15,348	18.7%
Educational attainment not available (workers aged 29 or younger)	16,801	20.5%

Jobs by Worker Sex		
	Count	Share
Male	39,537	48.2%
Female	42,461	51.8%

Source: U.S. Census Bureau, Longitudinal Employer-Household Dynamics program

Marion County

Where Workers Live in Marion County



Source: U.S. Census Bureau, Longitudinal Employer-Household Dynamics program; Google Earth

Map Legend

Job Density [Jobs/Sq. Mile]	Job Count [Jobs/Census Block]
5 - 175	1 - 3
176 - 685	4 - 43
686 - 1,535	44 - 214
1,536 - 2,725	215 - 676
2,726 - 4,256	677 - 1,649

Workers who live in Marion County are also clustered around transportation corridors, reflecting the relatively high amount of commuting to adjoining metropolitan areas. The rural nature of the county is also reflected in the broad distribution of home areas in the western half of the county.

Marion County

Home Area Profile Summary

Total Primary Jobs		
	Count	Share
Total Primary Jobs	95,697	100.0%
Jobs by Worker Age		
	Count	Share
Age 29 or younger	19,988	20.9%
Age 30 to 54	52,605	55.0%
Age 55 or older	23,104	24.1%
Jobs by Earnings		
	Count	Share
\$1,250 per month or less	24,641	25.7%
\$1,251 to \$3,333 per month	45,126	47.2%
More than \$3,333 per month	25,930	27.1%
Jobs by NAICS Industry Sector		
	Count	Share
Agriculture, Forestry, Fishing and Hunting	1,869	2.0%
Mining, Quarrying, and Oil and Gas Extraction	184	0.2%
Utilities	595	0.6%
Construction	6,017	6.3%
Manufacturing	6,292	6.6%
Wholesale Trade	3,585	3.7%
Retail Trade	13,997	14.6%
Transportation and Warehousing	2,566	2.7%
Information	1,562	1.6%
Finance and Insurance	2,934	3.1%
Real Estate and Rental and Leasing	1,585	1.7%
Professional, Scientific, and Technical Services	4,160	4.3%
Management of Companies and Enterprises	695	0.7%
Administration & Support, Waste Management and Remediation	5,356	5.6%
Educational Services	9,833	10.3%
Health Care and Social Assistance	14,122	14.8%
Arts, Entertainment, and Recreation	2,120	2.2%
Accommodation and Food Services	9,022	9.4%
Other Services (excluding Public Administration)	2,789	2.9%
Public Administration	6,414	6.7%

Source: U.S. Census Bureau, Longitudinal Employer-Household Dynamics program

Marion County

Home Area Profile Summary Continued-Demographics

Jobs by Worker Race		
	Count	Share
White Alone	80,930	84.6%
Black or African American Alone	11,484	12.0%
American Indian or Alaska Native Alone	456	0.5%
Asian Alone	1,792	1.9%
Native Hawaiian or Other Pacific Islander Alone	69	0.1%
Two or More Race Groups	966	1.0%

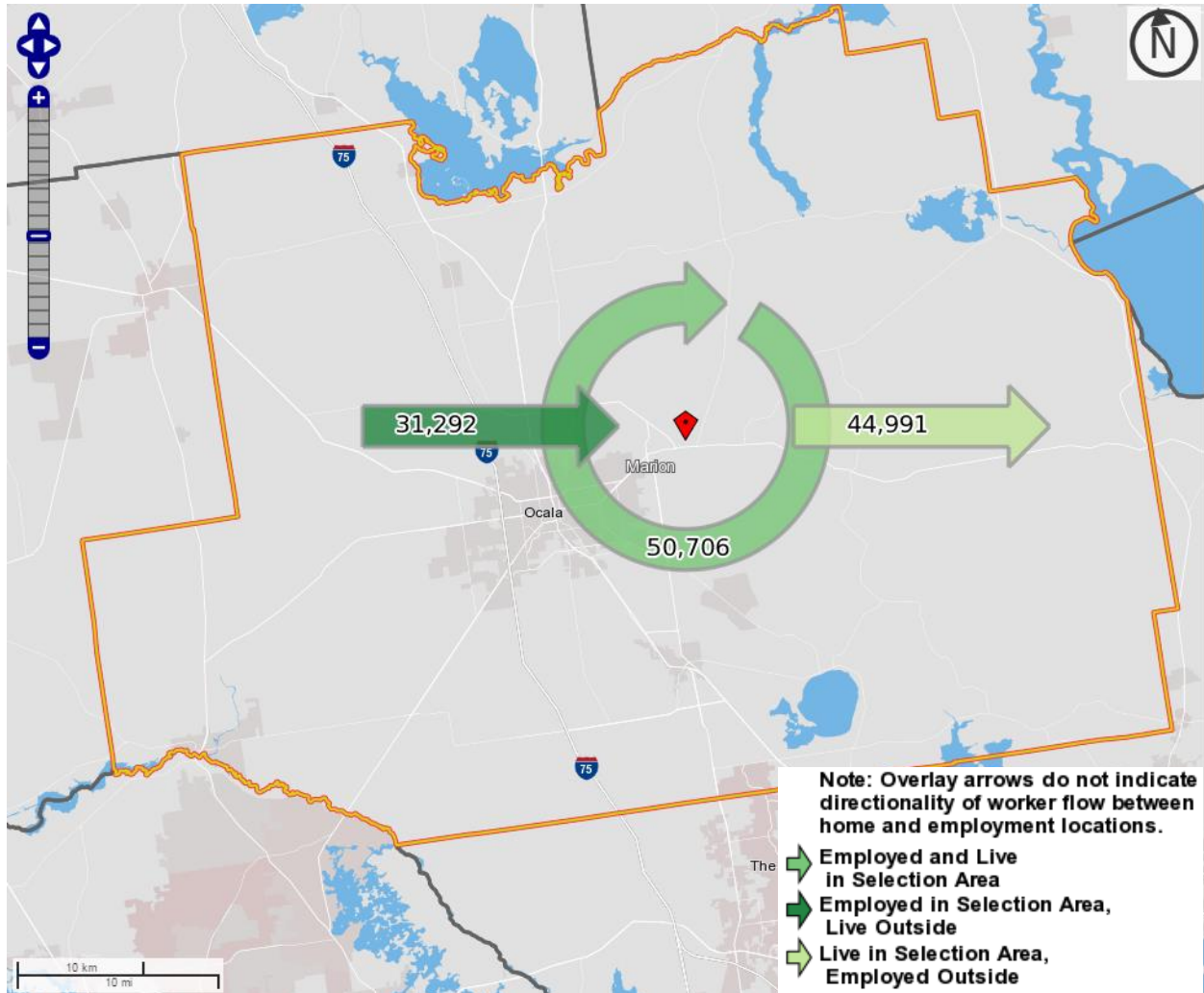
Jobs by Worker Ethnicity		
	Count	Share
Not Hispanic or Latino	86,043	89.9%
Hispanic or Latino	9,654	10.1%

Jobs by Worker Educational Attainment		
	Count	Share
Less than high school	9,826	10.3%
High school or equivalent, no college	22,619	23.6%
Some college or Associate degree	24,837	26.0%
Bachelor's degree or advanced degree	18,427	19.3%
Educational attainment not available (workers aged 29 or younger)	19,988	20.9%

Jobs by Worker Sex		
	Count	Share
Male	46,208	48.3%
Female	49,489	51.7%

Source: U.S. Census Bureau, Longitudinal Employer-Household Dynamics program

Marion County Labor Inflow/Outflow Map



Source: U.S. Census Bureau, Longitudinal Employer-Household Dynamics program

Of the 81,998 people who are employed in Marion County, 50,706 live and work in the county. There are 31,292 workers who live outside Marion County and work within the county. Of the 95,697 workers who live within Marion County, there are 44,991 residents who work outside the county. There is a net job outflow of 13,699 workers from Marion County. There are 630 people employed in Marion County who live in other states and 789 Marion County residents who work in other states.

Marion County

Labor Inflow/Outflow Summary

Selection Area Labor Market Size (Primary Jobs)		
	Count	Share
Employed in the Selection Area	81,998	100.0%
Living in the Selection Area	95,697	116.7%
Net Job Inflow (+) or Outflow (-)	-13,699	-
In-Area Labor Force Efficiency (Primary Jobs)		
	Count	Share
Living in the Selection Area	95,697	100.0%
Living and Employed in the Selection Area	50,706	53.0%
Living in the Selection Area but Employed Outside	44,991	47.0%
In-Area Employment Efficiency (Primary Jobs)		
	Count	Share
Employed in the Selection Area	81,998	100.0%
Employed and Living in the Selection Area	50,706	61.8%
Employed in the Selection Area but Living Outside	31,292	38.2%
Outflow Job Characteristics (Primary Jobs)		
	Count	Share
External Jobs Filled by Residents	44,991	100.0%
Workers Aged 29 or younger	10,794	24.0%
Workers Aged 30 to 54	23,773	52.8%
Workers Aged 55 or older	10,424	23.2%
Workers Earning \$1,250 per month or less	13,086	29.1%
Workers Earning \$1,251 to \$3,333 per month	20,025	44.5%
Workers Earning More than \$3,333 per month	11,880	26.4%
Workers in the "Goods Producing" Industry Class	5,671	12.6%
Workers in the "Trade, Transportation, and Utilities" Industry Class	13,264	29.5%
Workers in the "All Other Services" Industry Class	26,056	57.9%

Source: U.S. Census Bureau, Longitudinal Employer-Household Dynamics program

Marion County

Labor Inflow/Outflow Summary Continued

Inflow Job Characteristics (Primary Jobs)		
	Count	Share
Internal Jobs Filled by Outside Workers	31,292	100.0%
Workers Aged 29 or younger	7,607	24.3%
Workers Aged 30 to 54	16,768	53.6%
Workers Aged 55 or older	6,917	22.1%
Workers Earning \$1,250 per month or less	8,657	27.7%
Workers Earning \$1,251 to \$3,333 per month	14,253	45.5%
Workers Earning More than \$3,333 per month	8,382	26.8%
Workers in the "Goods Producing" Industry Class	4,062	13.0%
Workers in the "Trade, Transportation, and Utilities" Industry Class	10,749	34.4%
Workers in the "All Other Services" Industry Class	16,481	52.7%
Interior Flow Job Characteristics (Primary Jobs)		
	Count	Share
Internal Jobs Filled by Residents	50,706	100.0%
Workers Aged 29 or younger	9,194	18.1%
Workers Aged 30 to 54	28,832	56.9%
Workers Aged 55 or older	12,680	25.0%
Workers Earning \$1,250 per month or less	11,555	22.8%
Workers Earning \$1,251 to \$3,333 per month	25,101	49.5%
Workers Earning More than \$3,333 per month	14,050	27.7%
Workers in the "Goods Producing" Industry Class	8,691	17.1%
Workers in the "Trade, Transportation, and Utilities" Industry Class	7,479	14.7%
Workers in the "All Other Services" Industry Class	34,536	68.1%

Source: U.S. Census Bureau, Longitudinal Employer-Household Dynamics program

Work Destination Summary

Where Workers are Employed Who Live in Marion County

Total Primary Jobs		
	Count	Share
Total Primary Jobs	95,697	100.0%
Counties Where Marion County Workers are Employed		
	Count	Share
Marion County, FL	50,706	53.0%
Orange County, FL	5,377	5.6%
Alachua County, FL	4,637	4.8%
Lake County, FL	4,434	4.6%
Sumter County, FL	4,120	4.3%
Hillsborough County, FL	3,546	3.7%
Duval County, FL	2,197	2.3%
Citrus County, FL	2,106	2.2%
Pinellas County, FL	2,057	2.1%
Volusia County, FL	1,611	1.7%
Seminole County, FL	1,583	1.7%
Polk County, FL	1,547	1.6%
Pasco County, FL	895	0.9%
Palm Beach County, FL	727	0.8%
Miami-Dade County, FL	698	0.7%
Putnam County, FL	668	0.7%
Leon County, FL	630	0.7%
Brevard County, FL	613	0.6%
Hernando County, FL	580	0.6%
Levy County, FL	563	0.6%
Broward County, FL	557	0.6%
Osceola County, FL	553	0.6%
St. Johns County, FL	469	0.5%
Manatee County, FL	455	0.5%
Sarasota County, FL	425	0.4%
All Other Locations	3,943	4.1%

Source: U.S. Census Bureau, Longitudinal Employer-Household Dynamics program

Home Destination Summary

Where Workers Live Who are Employed in Marion County

Total Primary Jobs		
	Count	Share
Total Primary Jobs	81,998	100.0%
Counties Where Marion County Workers Live		
	Count	Share
Marion County, FL	50,706	61.8%
Citrus County, FL	3,345	4.1%
Lake County, FL	2,234	2.7%
Alachua County, FL	2,041	2.5%
Orange County, FL	1,979	2.4%
Duval County, FL	1,762	2.1%
Hillsborough County, FL	1,598	1.9%
Volusia County, FL	1,517	1.9%
Levy County, FL	1,282	1.6%
Sumter County, FL	1,235	1.5%
Pinellas County, FL	1,145	1.4%
Seminole County, FL	1,084	1.3%
Pasco County, FL	1,017	1.2%
Putnam County, FL	991	1.2%
Polk County, FL	884	1.1%
Brevard County, FL	754	0.9%
Flagler County, FL	689	0.8%
Dixie County, FL	666	0.8%
Clay County, FL	451	0.6%
Hernando County, FL	423	0.5%
Lee County, FL	423	0.5%
St. Johns County, FL	421	0.5%
Osceola County, FL	409	0.5%
Leon County, FL	390	0.5%
Sarasota County, FL	346	0.4%
All Other Locations	4,206	5.1%

Source: U.S. Census Bureau, Longitudinal Employer-Household Dynamics program

Work Distance/Direction Summary

Travel of Workers Who Live in Marion County

Job Counts in Work Blocks by Distance Only

	Count	Share
Total Primary Jobs	95,697	100.0%
Less than 10 miles	36,623	38.3%
10 to 24 miles	21,329	22.3%
25 to 50 miles	10,143	10.6%
Greater than 50 miles	27,602	28.8%

Job Counts in Work Blocks to the North of Home Blocks by Distance

	Count	Share
Total Primary Jobs	10,733	100.0%
Less than 10 miles	3,684	34.3%
10 to 24 miles	2,598	24.2%
25 to 50 miles	1,956	18.2%
Greater than 50 miles	2,495	23.2%

Job Counts in Work Blocks to the Northeast of Home Blocks by Distance

	Count	Share
Total Primary Jobs	7,619	100.0%
Less than 10 miles	3,874	50.8%
10 to 24 miles	1,816	23.8%
25 to 50 miles	396	5.2%
Greater than 50 miles	1,533	20.1%

Job Counts in Work Blocks to the East of Home Blocks by Distance

	Count	Share
Total Primary Jobs	7,446	100.0%
Less than 10 miles	3,097	41.6%
10 to 24 miles	2,312	31.1%
25 to 50 miles	516	6.9%
Greater than 50 miles	1,521	20.4%

Job Counts in Work Blocks to the Southeast of Home Blocks by Distance

	Count	Share
Total Primary Jobs	19,605	100.0%
Less than 10 miles	4,186	21.4%
10 to 24 miles	3,309	16.9%
25 to 50 miles	2,343	12.0%
Greater than 50 miles	9,767	49.8%

Source: U.S. Census Bureau, Longitudinal Employer-Household Dynamics program

Work Distance/Direction Summary Continued Travel of Workers Who Live in Marion County

Job Counts in Work Blocks to the South of Home Blocks by Distance

	Count	Share
Total Primary Jobs	16,117	100.0%
Less than 10 miles	4,408	27.4%
10 to 24 miles	3,301	20.5%
25 to 50 miles	1,039	6.4%
Greater than 50 miles	7,369	45.7%

Job Counts in Work Blocks to the Southwest of Home Blocks by Distance

	Count	Share
Total Primary Jobs	10,427	100.0%
Less than 10 miles	4,677	44.9%
10 to 24 miles	1,979	19.0%
25 to 50 miles	1,201	11.5%
Greater than 50 miles	2,570	24.6%

Job Counts in Work Blocks to the West of Home Blocks by Distance

	Count	Share
Total Primary Jobs	9,683	100.0%
Less than 10 miles	6,328	65.4%
10 to 24 miles	2,365	24.4%
25 to 50 miles	470	4.9%
Greater than 50 miles	520	5.4%

Job Counts in Work Blocks to the Northwest of Home Blocks by Distance

	Count	Share
Total Primary Jobs	14,067	100.0%
Less than 10 miles	6,369	45.3%
10 to 24 miles	3,649	25.9%
25 to 50 miles	2,222	15.8%
Greater than 50 miles	1,827	13.0%

Source: U.S. Census Bureau, Longitudinal Employer-Household Dynamics program

Work Distance/Direction Summary

Travel of Workers Who Work in Marion County

Job Counts in Home Blocks by Distance Only

	Count	Share
Total Primary Jobs	81,998	100.0%
Less than 10 miles	34,962	42.6%
10 to 24 miles	18,779	22.9%
25 to 50 miles	8,562	10.4%
Greater than 50 miles	19,695	24.0%

Job Counts in Home Blocks to the North of Work Blocks by Distance

	Count	Share
Total Primary Jobs	8,399	100.0%
Less than 10 miles	3,661	43.6%
10 to 24 miles	1,556	18.5%
25 to 50 miles	1,124	13.4%
Greater than 50 miles	2,058	24.5%

Job Counts in Home Blocks to the Northeast of Work Blocks by Distance

	Count	Share
Total Primary Jobs	8,295	100.0%
Less than 10 miles	4,432	53.4%
10 to 24 miles	1,313	15.8%
25 to 50 miles	849	10.2%
Greater than 50 miles	1,701	20.5%

Job Counts in Home Blocks to the East of Work Blocks by Distance

	Count	Share
Total Primary Jobs	10,640	100.0%
Less than 10 miles	6,315	59.4%
10 to 24 miles	2,215	20.8%
25 to 50 miles	469	4.4%
Greater than 50 miles	1,641	15.4%

Job Counts in Home Blocks to the Southeast of Work Blocks by Distance

	Count	Share
Total Primary Jobs	17,761	100.0%
Less than 10 miles	6,451	36.3%
10 to 24 miles	4,081	23.0%
25 to 50 miles	1,564	8.8%
Greater than 50 miles	5,665	31.9%

Source: U.S. Census Bureau, Longitudinal Employer-Household Dynamics program

Work Distance/Direction Summary Continued

Travel of Workers Who Work in Marion County

Job Counts in Home Blocks to the South of Work Blocks by Distance

	Count	Share
Total Primary Jobs	12,489	100.0%
Less than 10 miles	3,743	30.0%
10 to 24 miles	2,914	23.3%
25 to 50 miles	1,002	8.0%
Greater than 50 miles	4,830	38.7%

Job Counts in Home Blocks to the Southwest of Work Blocks by Distance

	Count	Share
Total Primary Jobs	9,499	100.0%
Less than 10 miles	3,963	41.7%
10 to 24 miles	2,795	29.4%
25 to 50 miles	1,557	16.4%
Greater than 50 miles	1,184	12.5%

Job Counts in Home Blocks to the West of Work Blocks by Distance

	Count	Share
Total Primary Jobs	6,442	100.0%
Less than 10 miles	3,030	47.0%
10 to 24 miles	2,451	38.0%
25 to 50 miles	480	7.5%
Greater than 50 miles	481	7.5%

Job Counts in Home Blocks to the Northwest of Work Blocks by Distance

	Count	Share
Total Primary Jobs	8,473	100.0%
Less than 10 miles	3,367	39.7%
10 to 24 miles	1,454	17.2%
25 to 50 miles	1,517	17.9%
Greater than 50 miles	2,135	25.2%

Source: U.S. Census Bureau, Longitudinal Employer-Household Dynamics program

**Florida Department of Economic Opportunity
Bureau of Labor Market Statistics**

**Caldwell Building
MSC G-020
107 E. Madison Street
Tallahassee, Florida 32399-4111
Phone (850) 245-7225**



www.floridajobs.org/labor-market-information